

Custom Edubuntu 12.04 - Installation Steps

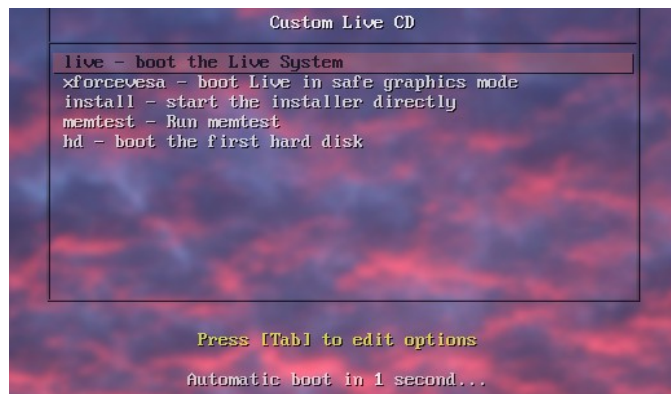
System Requirements

1. To serve 20 thin clients, atleast 4 GB RAM in the server. For a standalone computer 1GB RAM
2. 80 GB Hard Disk
3. Core 2 Duo Processor

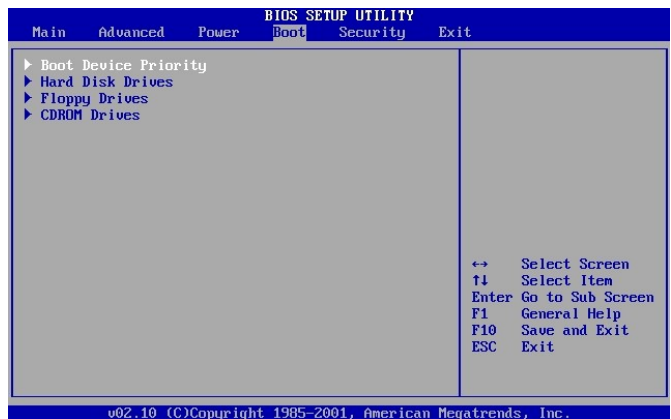
Installation Steps

The Computer should boot from CD or DVD. (Usually the computer will boot using the hard disk)

- Insert DVD and restart the computer
- You will see a screen like the first one, if the computer boots from the DVD.
- Else it will boot from the Hard disk

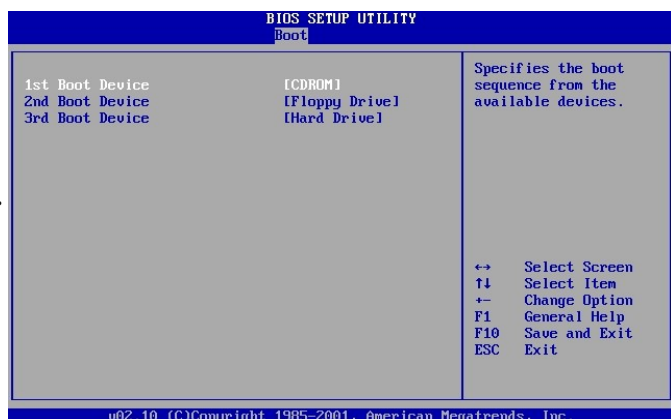


- Restart your computer. Read the message on the start up screen. You will have to press F2, F8, F12 on any other set up key. Use Arrow keys to select **Boot** menu and press enter on **Boot Device Priority** option
- Click on the already highlighted **1st Boot Device**. Select CD ROM from the list.
- Press F10 to save and exit. Now the computer will boot from the DVD.

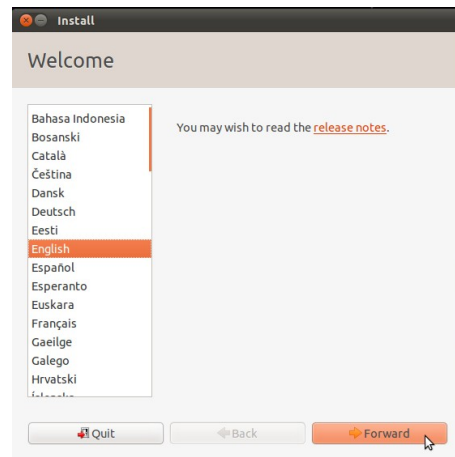


Note: Mouse will not work in the BIOS Utility. Please use keyboard for setting things in the BIOS.

- You will see the installer screen. Select - 'Install- start the installer directly' option and press Enter



- Select *English* and then press the Enter key.



- In the next step, the following points will be checked -
 - enough space available for the installation - ***this is important***
 - your system is connected to the internet - ***this is not required***
 - your system should be connected to the power source - ***this is important as the installation can take a long time***

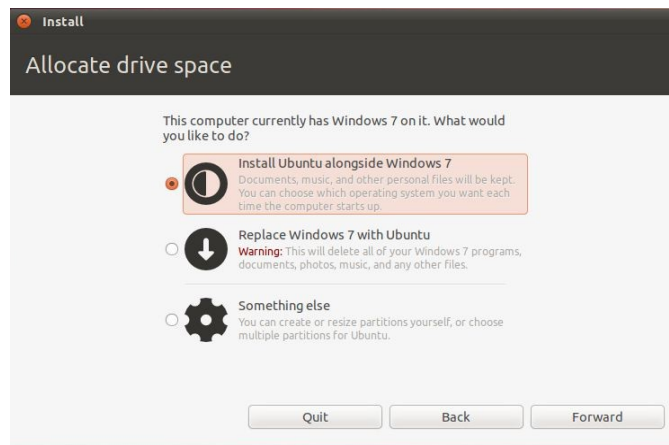


- **Edubuntu Options and Partitioning**

- On the Disk Setup page, you can choose how Edubuntu should be installed.
- Edubuntu installs a complete operating system to your computer.
- You can choose to install Edubuntu side-by-side with your existing operating system, erase the entire disk and start from scratch.

The preferred option would be to choose the option **Install them side-by-side, choosing between them each start-up.**

- Click **Forward**



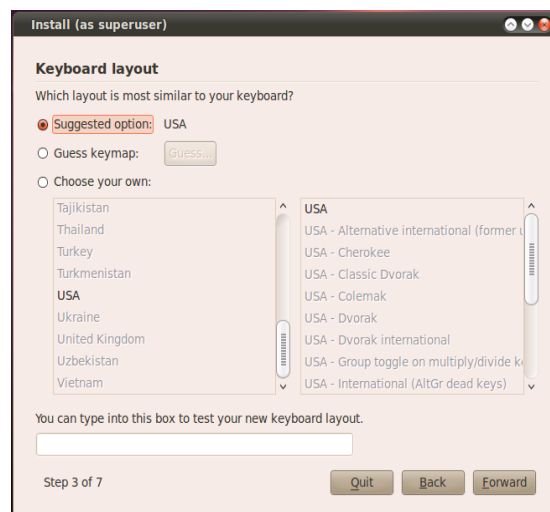
- **Select your time zone**

In the next step, you will be presented with a world map. Select the India map by clicking on it. Click Forward.



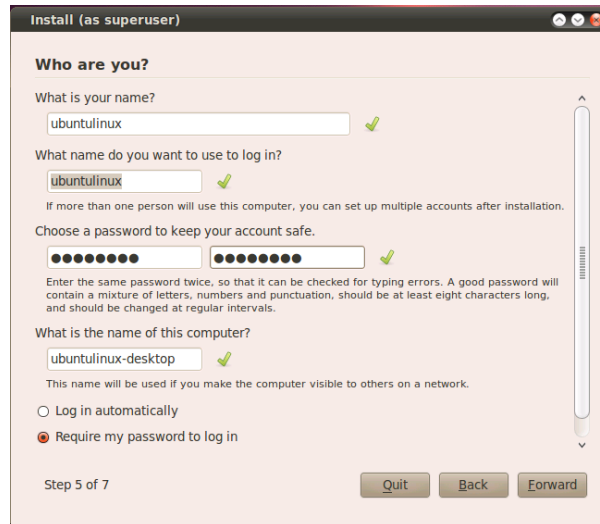
- **Select your keyboard layout**

- In this step, you have to choose the keyboard layout. The default keyboard layout is USA and it is selected by default in this step as shown below.
- **Click Forward (Default Keyboard Layout - USA).**



- **Enter User Details**

- In the user setup dialog, you will be requested to set up the administrator user on the system.
- The user name cannot start with a number, and must be lowercase letters only. If you make mistakes, the installer will warn you about it. It is recommended that you require a password to log in to the system.



The screenshot shows the 'Install (as superuser)' window with the 'Who are you?' section. It contains the following fields and options:

- What is your name?**: Text box with 'ubuntulinux' and a green checkmark.
- What name do you want to use to log in?**: Text box with 'ubuntulinux' and a green checkmark.
- Choose a password to keep your account safe.**: Two password fields with masked characters and a green checkmark.
- What is the name of this computer?**: Text box with 'ubuntulinux-desktop' and a green checkmark.
- Log in options**:
 - ☐ Log in automatically
 - ☒ Require my password to log in

At the bottom, it says 'Step 5 of 7' and has 'Quit', 'Back', and 'Forward' buttons.

After this step, the installation begins. Few more steps have to completed, as shown below.

- **Installation Complete**

- After the installation is complete, click on Restart Now
- Restart your system now and your DVD tray will open automatically.
- Remove the DVD and press Enter.