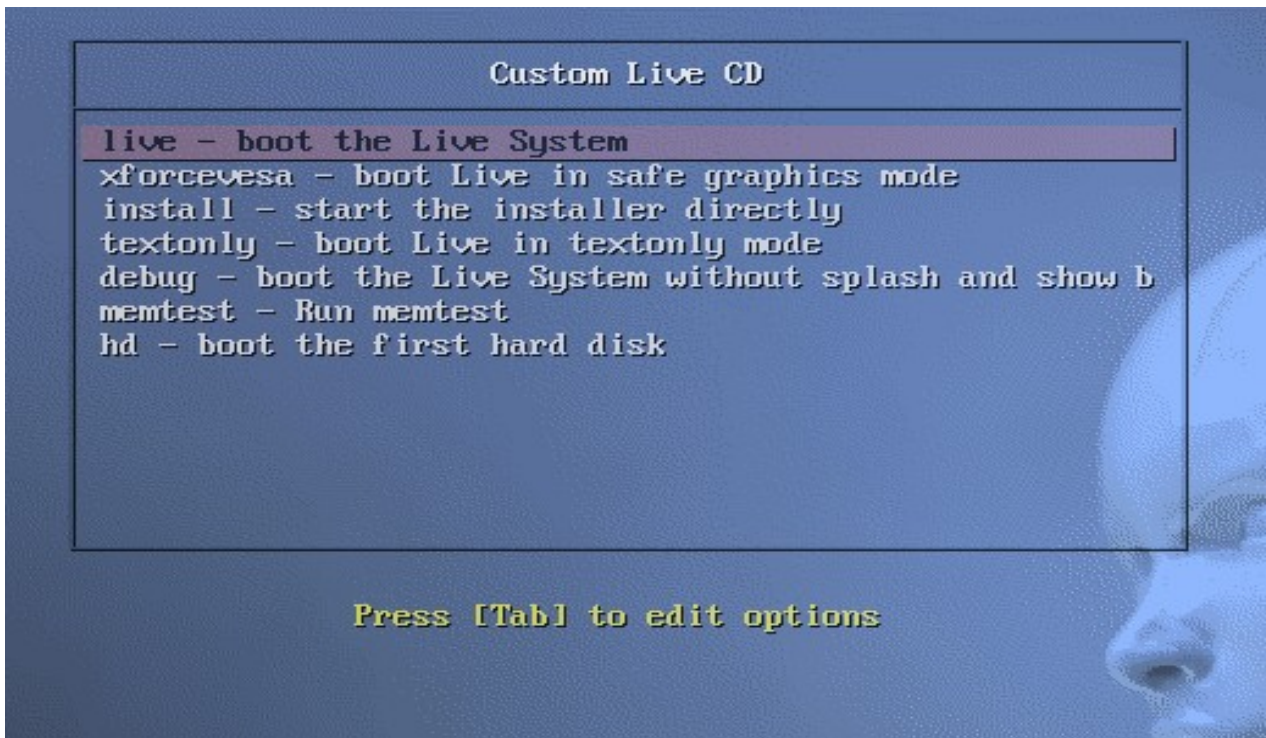


Ubuntu 14.04 Installation with Windows 7

It's easy to install Ubuntu 14.04 along side windows 7 from a DVD . Here's what you need to do:

Put the Ubuntu DVD into the DVD-drive

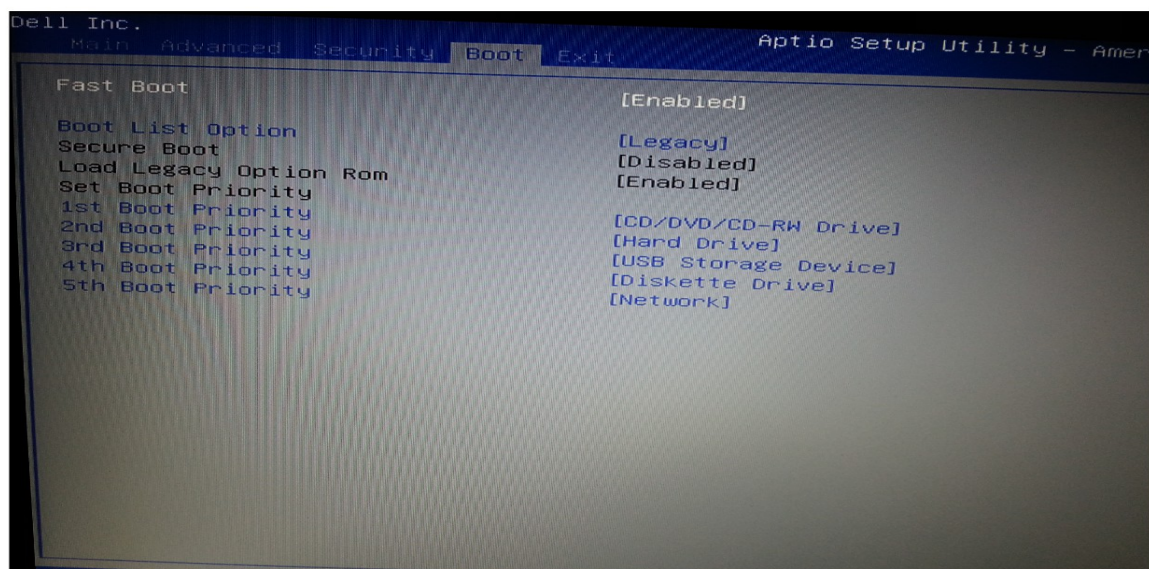
1. **Restart** your computer. You should see a welcome screen as shown in the below screen.



Note: Select Install-Start the installer directly. (In the above screen mouse will not work)

If you don't get this menu, you have to set up BIOS first boot device as DVD drive, for this please follow below steps

- Restart your computer, computers require you to hold down or press a key to entering a BIOS. The most common way to enter the BIOS is to press the DELETE key(F2,F10,F8 or F12).

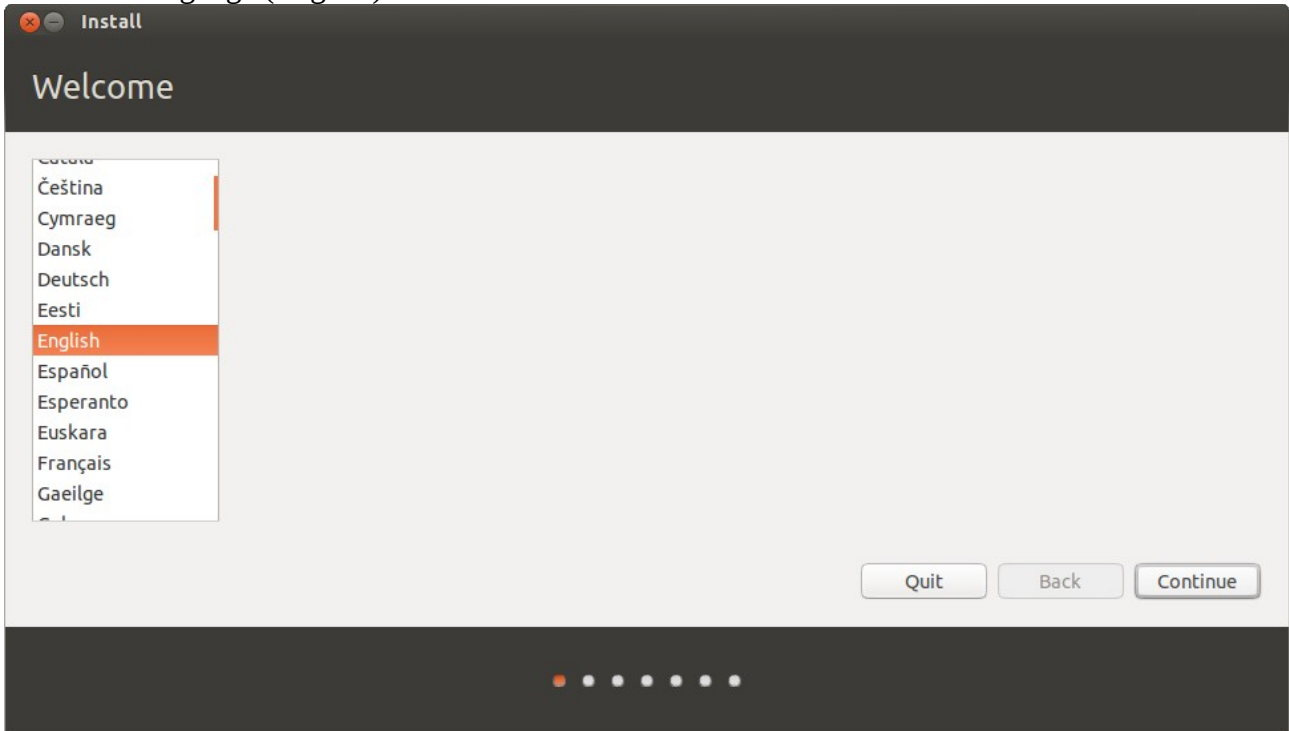


- In the above screen you have to select DVD drive as First boot devices then press F10 and save it.

Now you will see the 1st screen as explained in the first step.

2. Welcome screen :

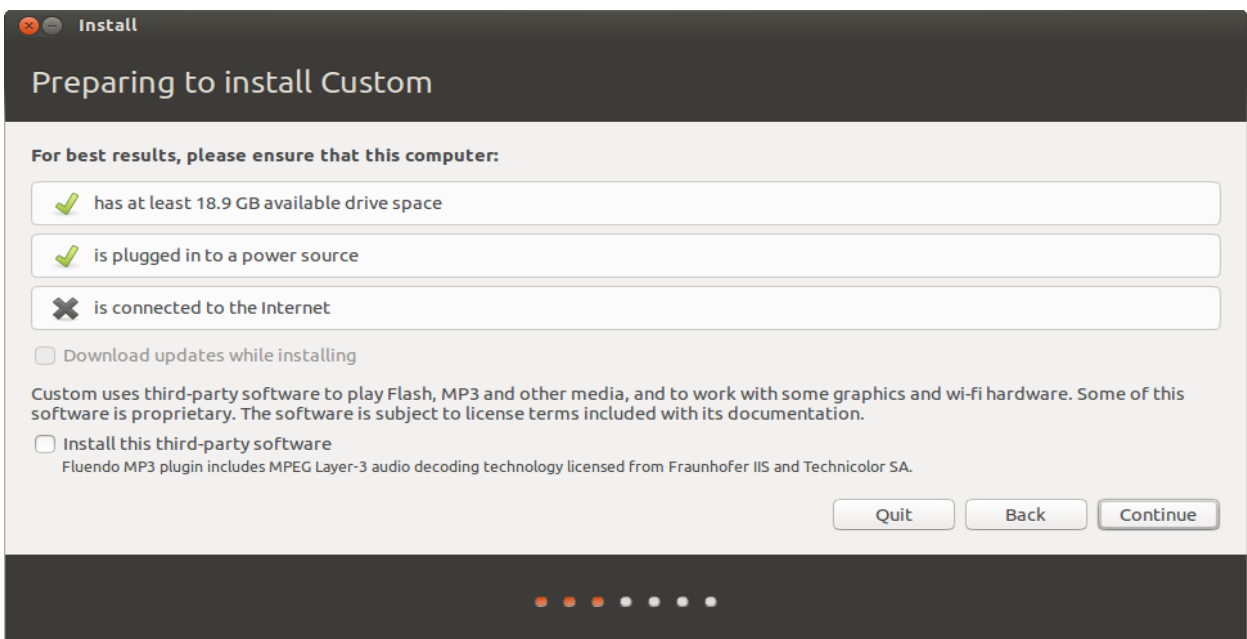
Choose language (English).



Click on Continue...

3. Prepare to install Ubuntu :

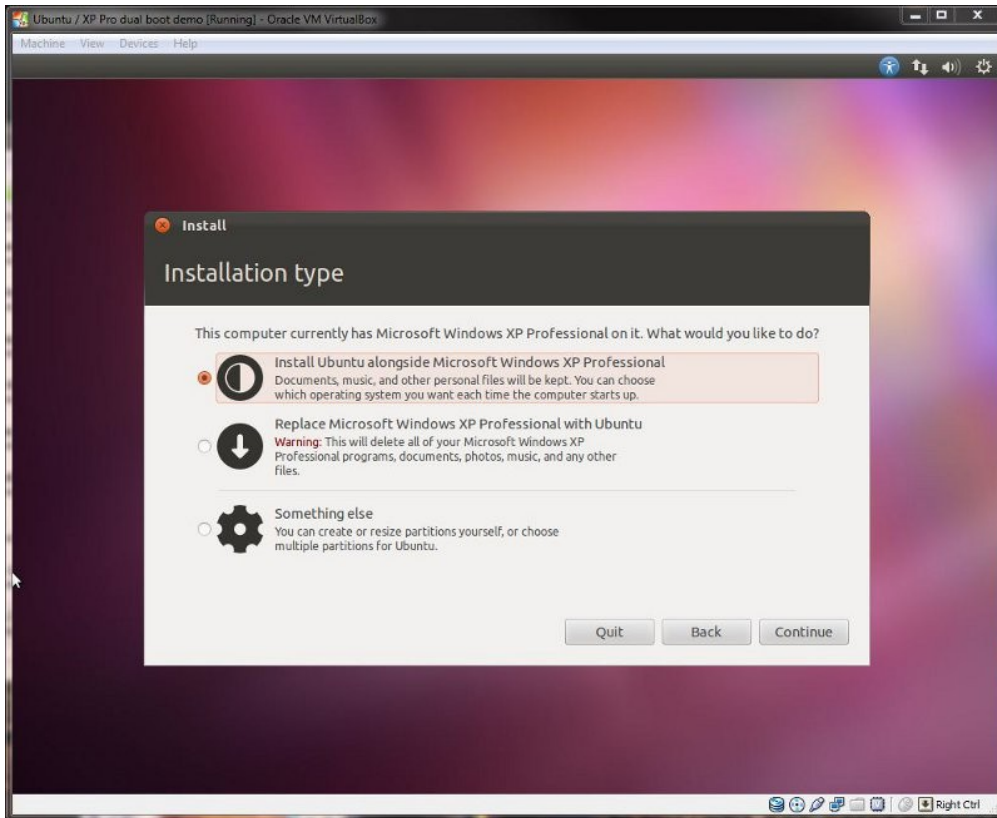
Make sure your system has enough free space (atleast 18.9 GB) , connected to Internet & power source.



Click on Continue...

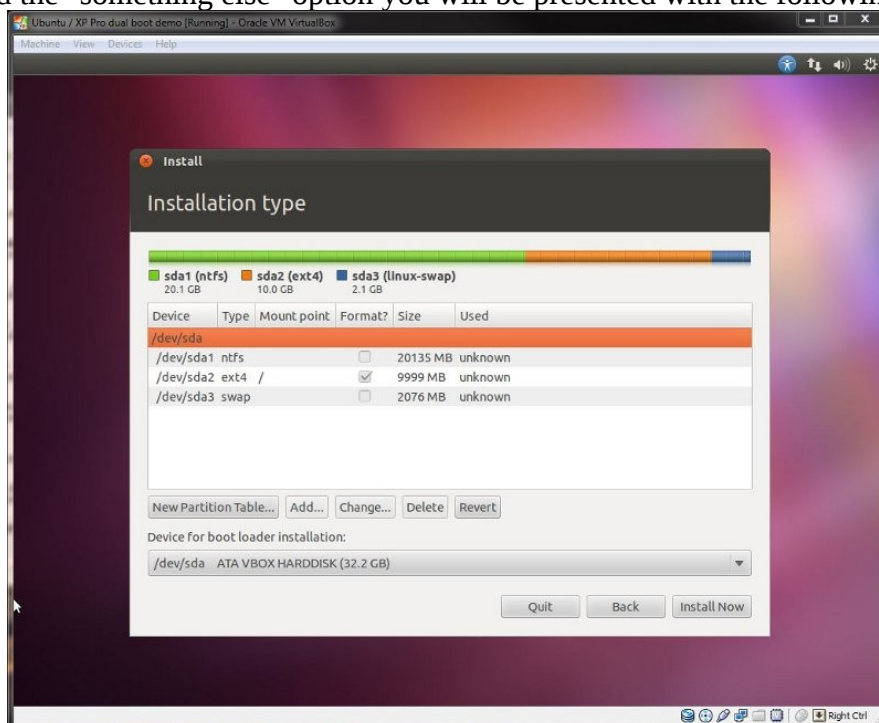
4.

Those of you that have current Windows installations or are going to dual-boot with another existing OS will be presented with a screen similar to below:



Click on Continue...

Having selected the "something else" option you will be presented with the following window:



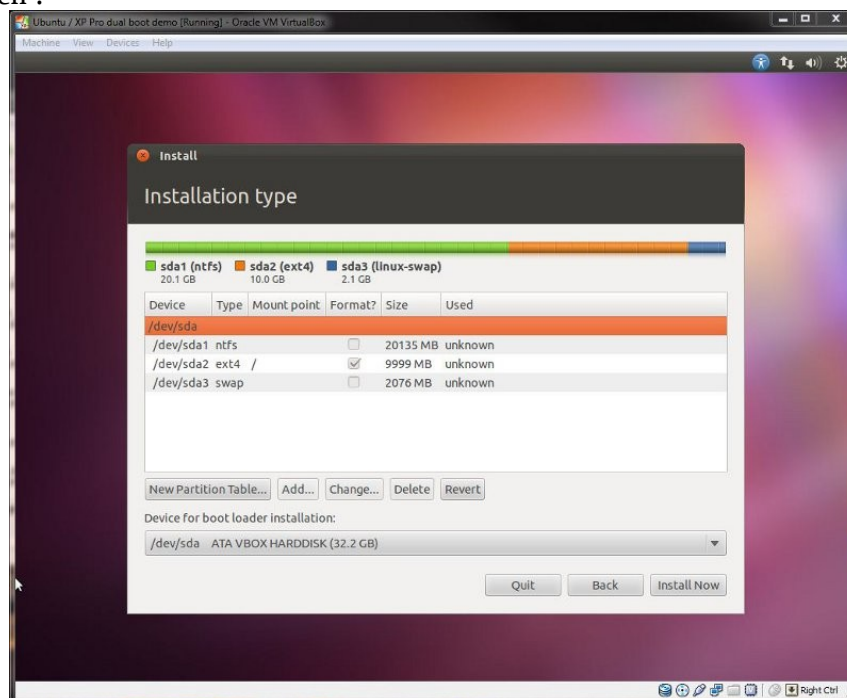
So to re-cap the above, (in my example) we have the following:

- /dev/sda1 is your Windows partition.
- /dev/sda2 is your new root partition (Windows equiv. of C 😊).
- /dev/sda3 is your SWAP space.

For Ubuntu installation, you need:

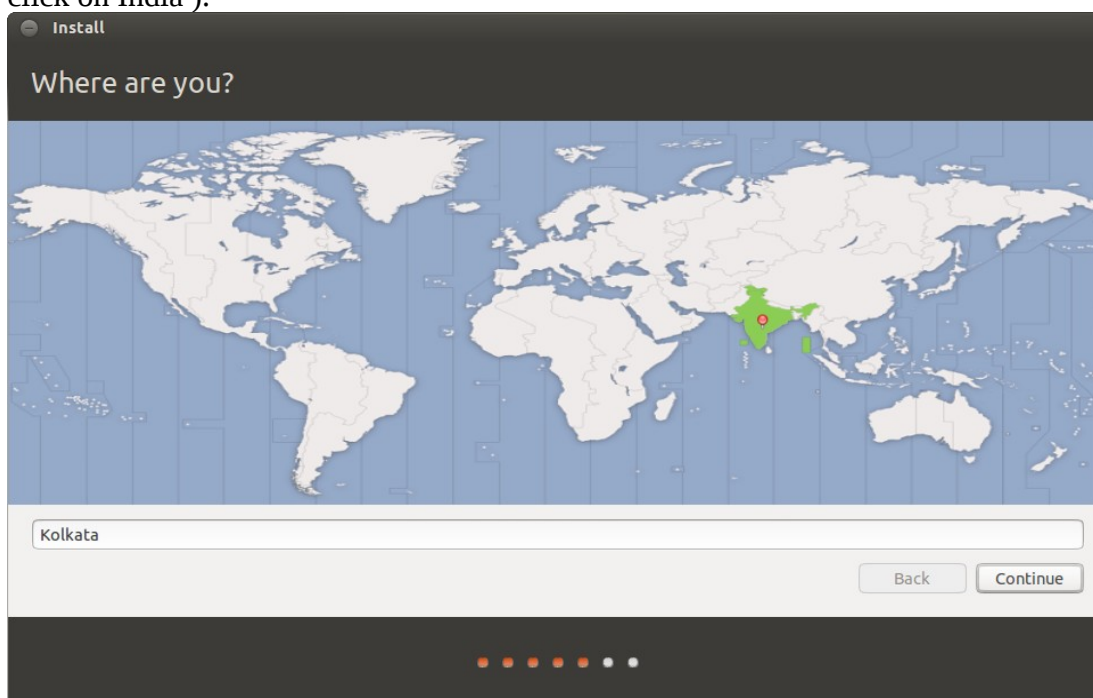
- Primary partition use as **Ext4**, mount point “/” (without quotes)
- Logical partition use as **Swap**. For laptops with high RAM and would like be able to hibernate the computer, set the swap size as much as RAM.

Like below screen :



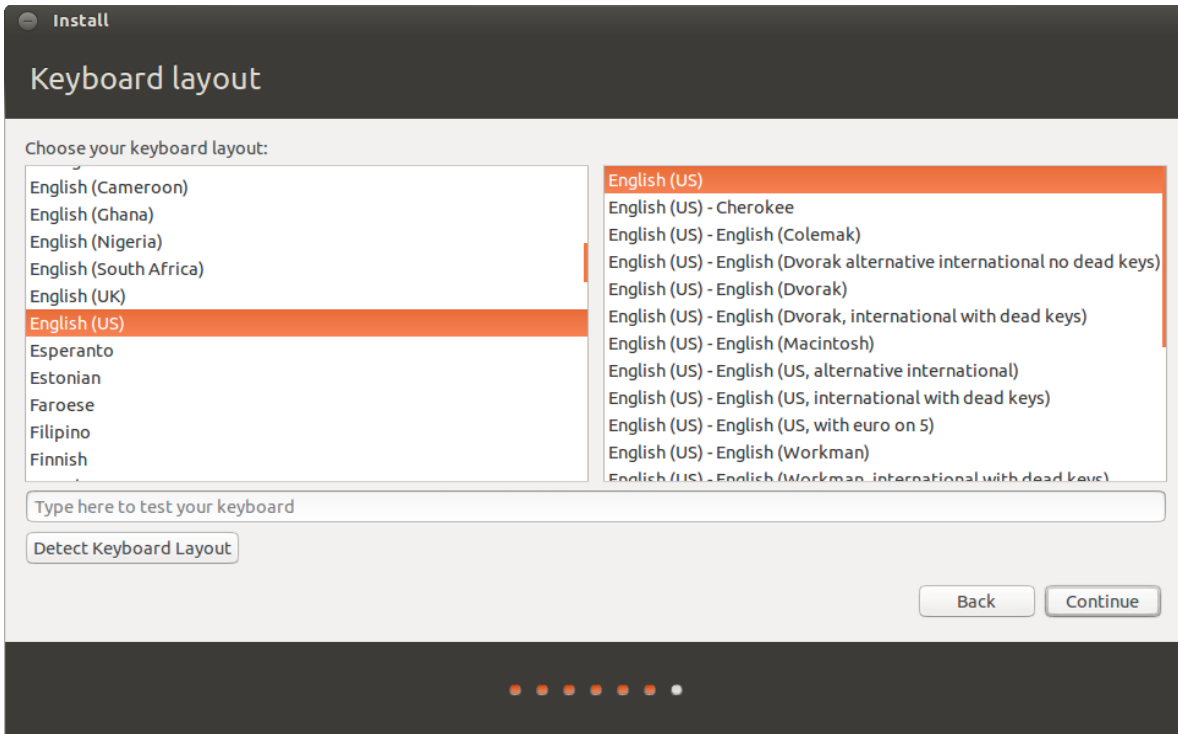
5. It will show the partition size used for Ubuntu. press **Install Now**.

6. Choose Time zone and press **Continue** (In the mean time setup will continue in the background, click on India).



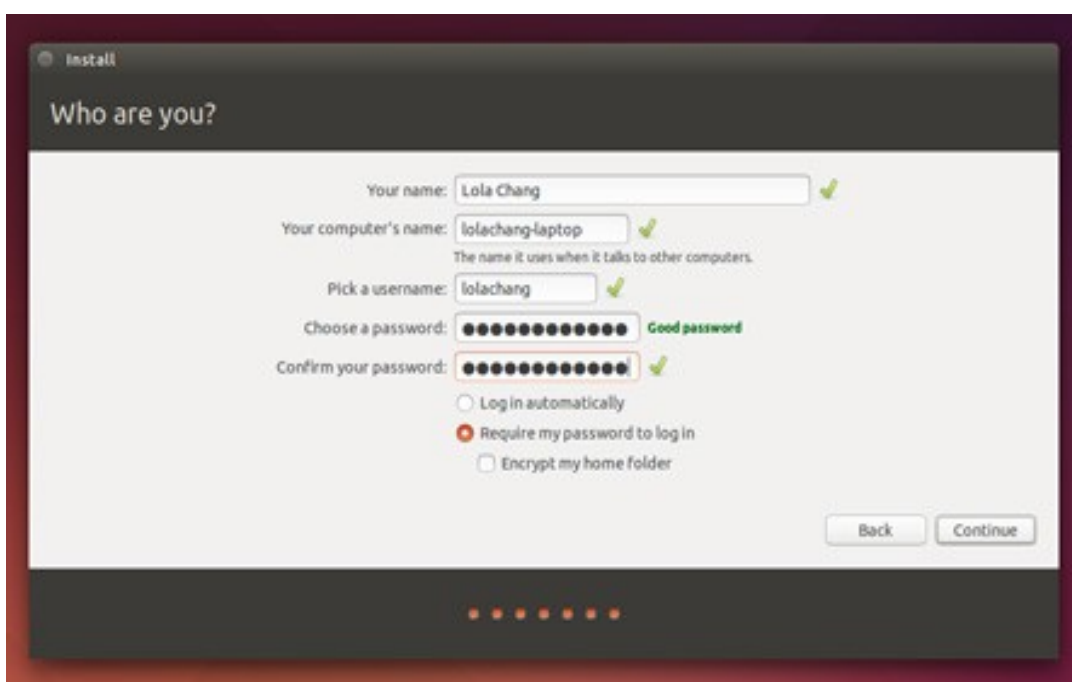
Click on Continue...

7. Now choose keyboard layout , leave as it is and press **Continue**.



Click on Continue...

8. Type name , computer name , username (for login) and password . But it will take Ubuntu as a password and username as default.



Click on Continue...

9. It will proceed with the rest of the installation.

10. Press **Restart now** and remove installation media(CD/DVD/USB) while rebooting.

For more details steps :

click this link : <http://www.techspot.com/community/topics/step-by-step-beginners-guide-to-installing-ubuntu-11-10.172128/>